

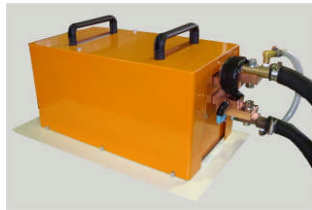
Single-side Spot Welder AH-1

Low Welding-force Single-side Spot Welder with Maximum 20-meter Secondary Cable

- ART-HIKARI-make MF transformer and special welding power supply has realized spot welding with lower welding force.
- Possible to work in combination with (about 20kg-mountable) small-size robots of every robot makers.
- Possible to extend the cables up to 20 meters.
- Possible to register 15 welding parameters and optionally other 240 welding parameters.
- Possible to set Current #1 or Current #2, and choose to set 1 - 99 times of pulse current for each #1 or #2.
- Available with a standard carriage.



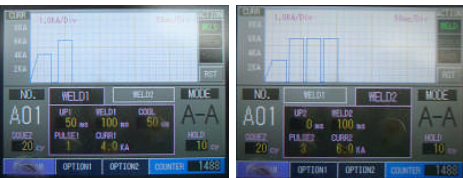
Power Supply



Transformer



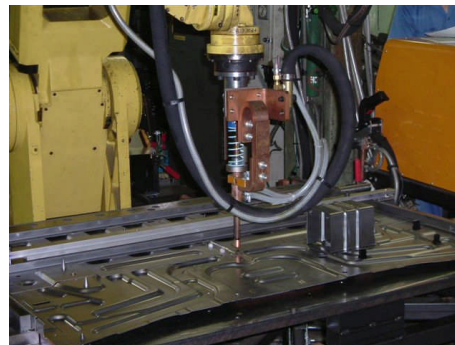
With Carriage (AH-D-1)



Display for Settings



Application Examples



Application Example for Robot

【SPECIFICATION】

Product Name	Single-side Spot Welder
Rated Capacity	130KVA
Primary Voltage	400V
Rated Frequency	50/60Hz
Max. short-circuit current	12000A
Duty Cycle	10%
Welding Force System	Manual or Spring Method
Transformer	AH-MF-J130
Timer	AH-FFHC